

# 6200-BPE Process Ready Tubing

DEKORON®  
**Unitherm™**  
Tubing Bundle Experts Since 1962

## Process Ready Tubing for Food & Pharmaceutical Series 6200-BPE

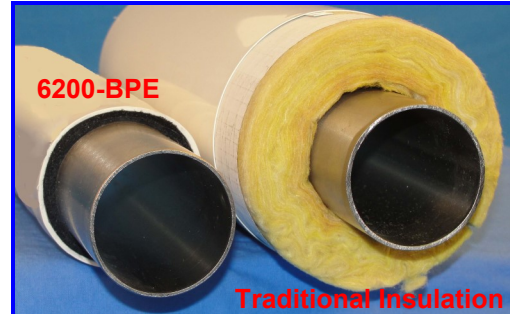
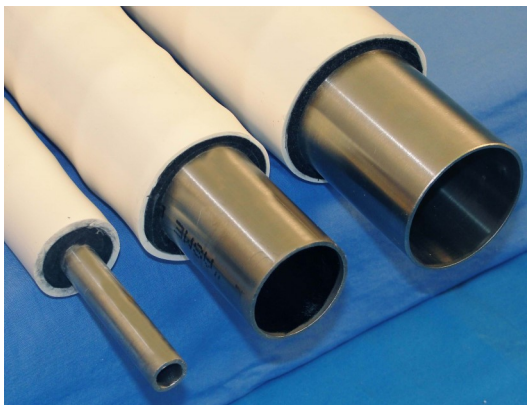
Dekoron® Unitherm™ LLC, the inventor of pre-insulated tubing products for industry, now introduces a new line of manufactured pre-insulated tubing system designed for the food and pharmaceutical industries. Until now, small diameter (up to 3" OD) process and supply lines have been insulated using pre-formed insulating halves that were lagged together and covered with a plastic jacket. This labor-intensive method often results in gaps in the insulation, openings in the jacket, and other deficiencies that degrade the efficient operation of the system and lead to higher operating costs.

The Series 6200-BPE Process Ready System provides tubing, insulation, and outer jacket in one manufactured unit for faster, more efficient installation. The smooth, continuous outer jacket reduces the chance for contaminant buildup as well as the chance that the insulation will be damaged by wash-downs and sterilization procedures.

### The Process Ready System is comprised of the following elements:

- Standard, Mechanical Polished, or Electropolished Type 316L welded stainless steel tubing to ASTM A-270 BPE Standard
- High performance, high efficiency, low chloride, hydrophobic thermal insulation
- Continuous, weather protective, lead-free, white flame retardant Polyvinylchloride (PVC) outer jacket
- Product conforms to ASME BPE-2009 Standard

The energy-efficient design provides for normal jacket surface temperatures of 140°F (60°C) or lower at 80°F (26°C) ambient conditions, while transporting 400°F (204°C) saturated steam



### Additional features and benefits of this system:

- Compact design - up to 45% smaller than traditional field-insulated tube
- Low heat loss - up to 3 times more efficient than traditional insulation materials
- Hydrophobic Insulation - water will not pass through, repelled by the insulation
- Consistent thermal properties
- Zero maintenance
- Pre-Engineered
- Continuous outer jacket - no gaps to allow wash-down fluids to damage insulation and no seams to trap contaminants
- Full line of complimentary pre-insulated fitting covers and splice kits
- Easy to install
- Lower installed cost - up to 30% less than traditional methods
- Smaller size means more efficient use of space in pipe racks and equipment skids
- Insulation not damaged by point loading or short-term compression

### Applications for this product:

- Hot and chilled water lines
- Clean steam lines
- Product transport lines
- Process steam lines
- Condensate return lines

DEKORON®  
**Unitherm™**  
Tubing Bundle Experts Since 1962

1531 Commerce Creek Boulevard • Cape Coral, Florida 33909  
Call Toll Free (800) 633-5015 • Telephone (239) 995-8111 • Fax (239) 995-8027

[www.unithermcc.com](http://www.unithermcc.com)

# 6200-BPE Process Ready Tubing

**DEKORON®**  
**Unitherm™**  
 Tubing Bundle Experts Since 1962

## Product Specifications

- 1/2" through 3" OD Bright Annealed, Mechanical Polish or Electropolished, welded T316L Stainless Steel Tubing manufactured to ASTM A-270 BPE Standard
- High Efficiency, High-Performance, Low Chloride, Hydrophobic Thermal Insulation
- Continuous, Seamless, White FRPVC outer jacket
- Product supplied trimmed and beveled for orbital welding

## Process Ready Accessories

Pre-Insulated 90° Elbow Cover for 1/2" through 1" OD Tubing for 1-1/2" and 2" OD Tubing for 2-1/2" and 3" OD Tubing

Pre-Insulated Tee Cover for 1/2" through 1" OD Tubing for 1-1/2" and 2" OD Tubing for 2-1/2" and 3" OD Tubing

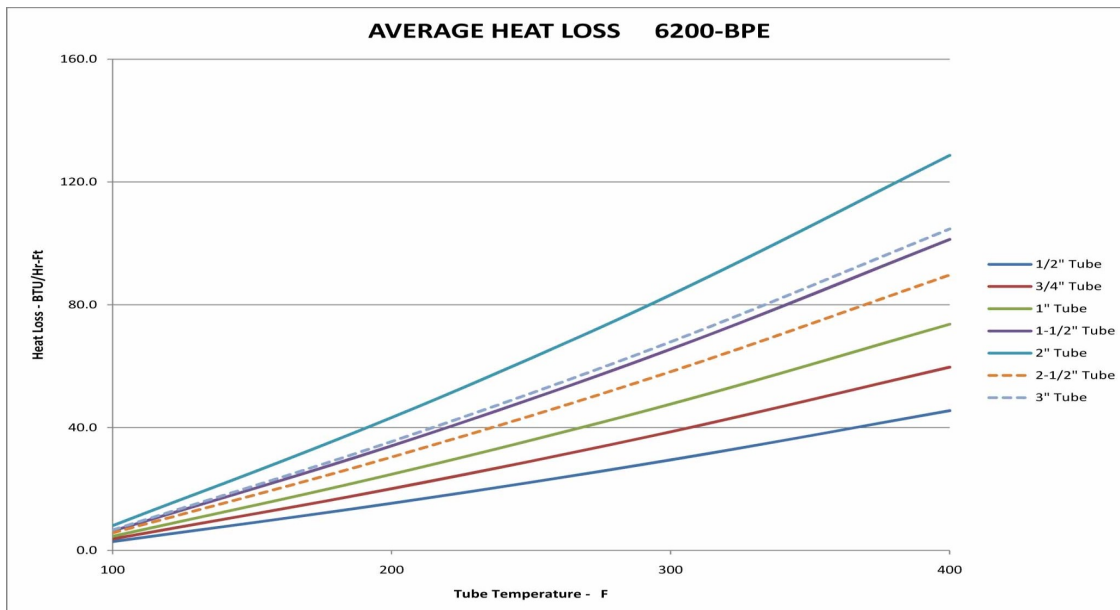
Pre-Insulated Splice Cover for 1/2" OD Tubing for 3/4" OD Tubing for 1" OD Tubing for 1-1/2" OD Tubing for 2" OD Tubing for 2-1/2" OD Tubing for 3" OD Tubing

## Product Number

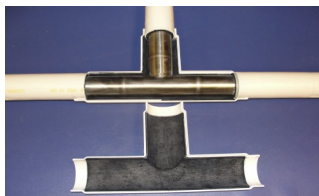
6200-BPE-L-1  
 6200-BPE-L-2  
 6200-BPE-L-3

6200-BPE-T-1  
 6200-BPE-T-2  
 6200-BPE-T-3

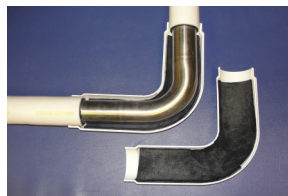
6200-BPE-S-0.5  
 6200-BPE-S-0.75  
 6200-BPE-S-1  
 6200-BPE-S-1.5  
 6200-BPE-S-2  
 6200-BPE-S-2.5  
 6200-BPE-S-3



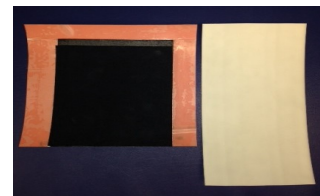
## Recommended Accessories



**TEE Cover**



**Elbow Cover**



**Splice Kit**

**DEKORON®**  
**Unitherm™**  
 Tubing Bundle Experts Since 1962

1531 Commerce Creek Boulevard • Cape Coral, Florida 33909

Call Toll Free (800) 633-5015 • Telephone (239) 995-8111 • Fax (239) 995-8027

[www.unithermcc.com](http://www.unithermcc.com)